

**Paper Reference 1MU0/03**  
**Pearson Edexcel**  
**Level 1/Level 2 GCSE (9–1)**

# **Music**

## **COMPONENT 3: Appraising**

**Wednesday 14 June 2023 – Afternoon**

# **Data Booklet**

**In the boxes below, write your name, centre number and candidate number.**

<b>Surname</b>					
<b>Other names</b>					
<b>Centre Number</b>					
<b>Candidate Number</b>					

## INSTRUCTIONS

There may be spare copies of some data sheets in case you need them.

**THIS DATA BOOKLET **MUST** BE RETURNED WITH  
THE QUESTION PAPER AT THE END OF THE  
EXAMINATION.**

## **Contents**

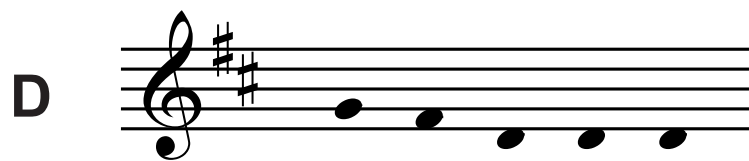
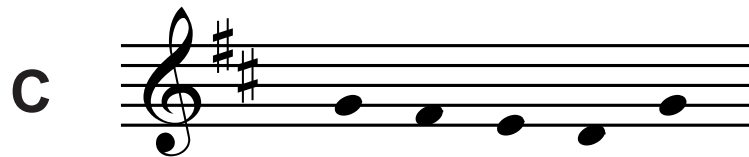
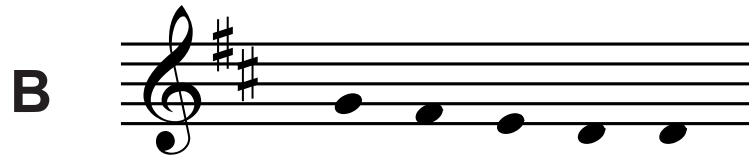
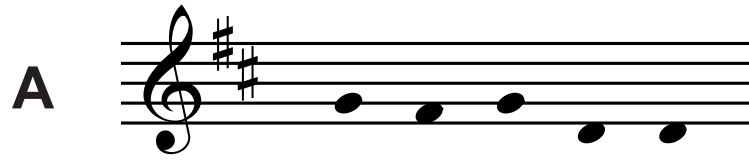
### **Page**

<b>4</b>	<b>Question 1(g)</b>
<b>5</b>	<b>Question 3(a)</b>
<b>6</b>	<b>Question 3(c)</b>
<b>7</b>	<b>Question 5(e)</b>
<b>8</b>	<b>Question 6(a) – Extract A</b>
<b>9</b>	<b>Question 6(b)</b>
<b>10</b>	<b>Question 7</b>
<b>11–12</b>	<b>Question 7 – Manuscript paper</b>
<b>13</b>	<b>Question 8</b>

### **Spare Copies**

<b>14</b>	<b>Question 3(a)</b>
<b>15</b>	<b>Question 3(c)</b>
<b>16</b>	<b>Question 6(a) – Table</b>
<b>17</b>	<b>Question 6(b)</b>
<b>18</b>	<b>Question 7</b>
<b>19–20</b>	<b>Question 7 – Manuscript paper</b>

## Question 1(g)



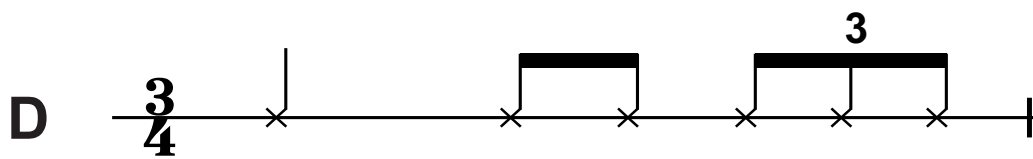
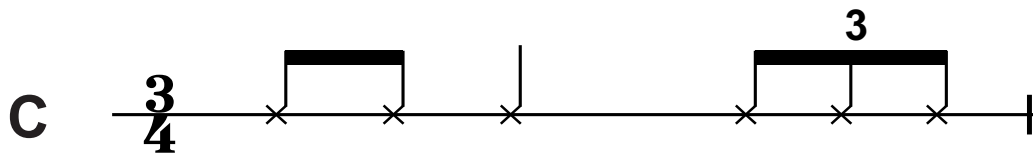
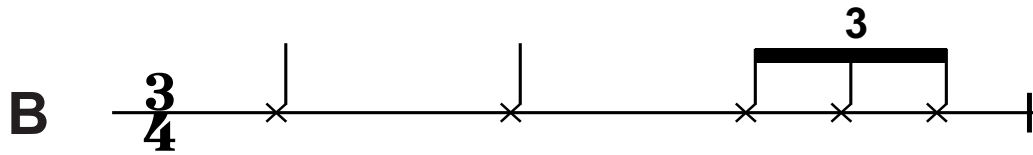
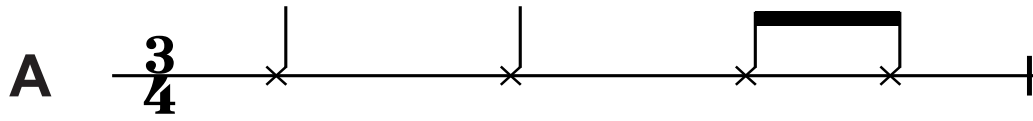
Question 3(a)

Statement	True	False
A The opening vocal melody is chromatic	<input type="checkbox"/>	<input type="checkbox"/>
B The opening vocal melody is melismatic	<input type="checkbox"/>	<input type="checkbox"/>

Question 3(c)


	<b>Rhythm</b>
<b>acoustic bass guitar</b>	
<b>second accompanying instrument</b>	

Question 5(e)



## Question 6(a) – Extract A

Cm



She keeps a Moë et Chan - don.

4 X Y

in her pret - ty ca - bi - net. 'Let them eat cake,' she says,

6 Z Eb Bb6

just like\_ Ma-rie An-toi-nette. A built - in\_ re-me-dy\_ for

Detailed description: This image shows the first system of a musical score for the song 'The Rose Tree'. It consists of a single staff in treble clef with a key signature of two flats (Bb and Eb). The music begins with a treble clef, followed by two flats (Bb and Eb), and then a '6' time signature. The melody is written in a simple, folk-like style with quarter and eighth notes, some beamed together. The lyrics are written below the staff, aligned with the notes. The lyrics are: 'just like\_ Ma-rie An-toi-nette. A built - in\_ re-me-dy\_ for'. The system ends with a double bar line.

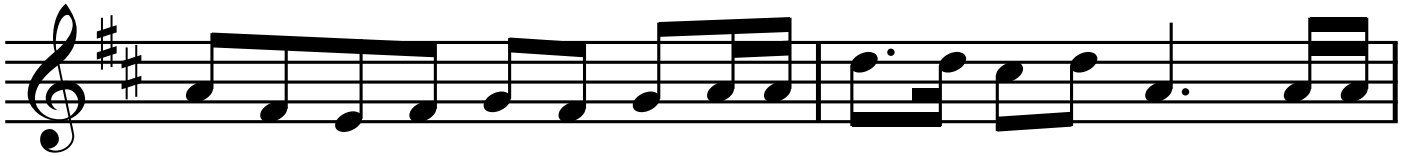
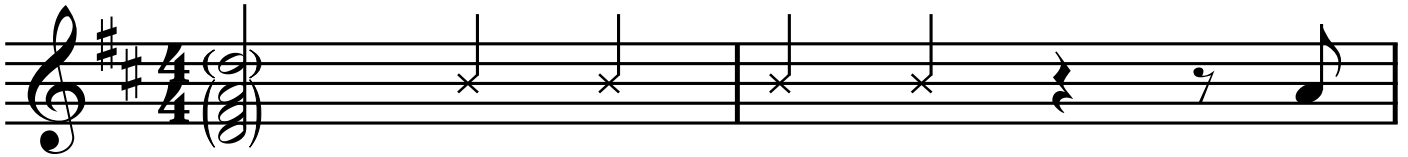


## Question 6(b)

Similarities	Differences
1	1
2	2

## Question 7

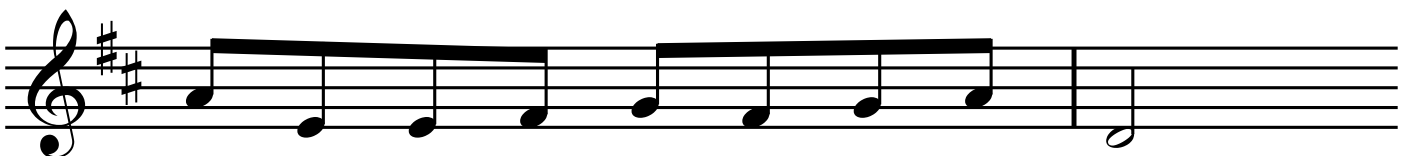
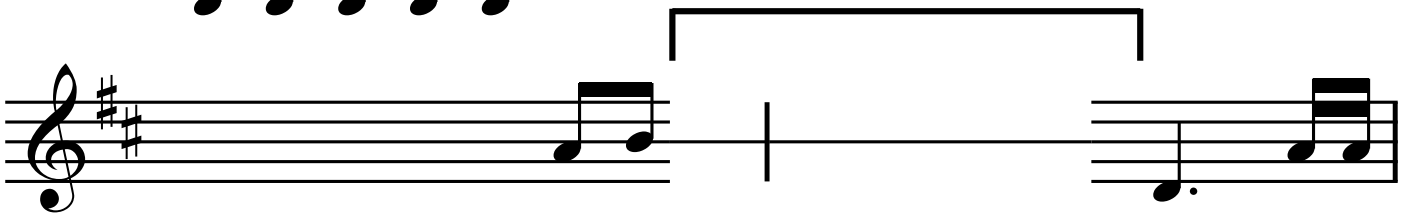
# Allegretto



**(a) melody?**



**(b) rhythm?**



**Question 7 – Manuscript paper**

---

---

---

---

---

---

---

---

---

---

---

---

---

---

---

---

---

---

---

---

---

---

---

---

---

---

---

---

---

---

---

---

**(continued on the next page)**

**Turn over**

**Question 7 – Manuscript paper continued.**

---

---

---

---

---

---

---

---

---

---

---

---

---

---

---

---

---

---

---

---

---

---

---

---

---

---

---

---

---

---

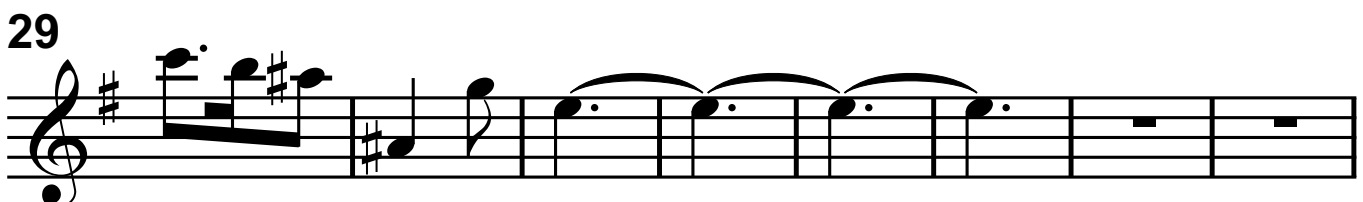
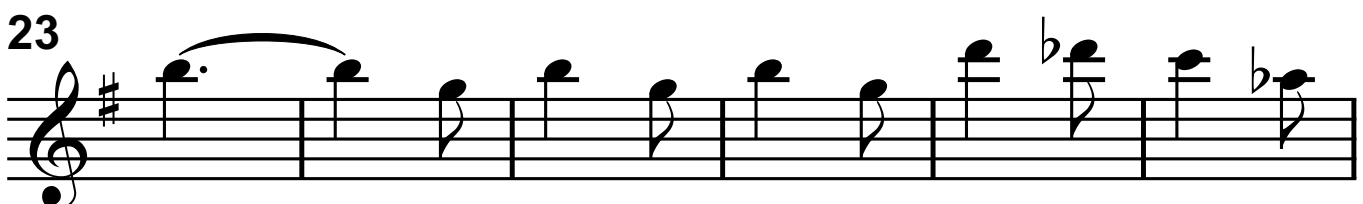
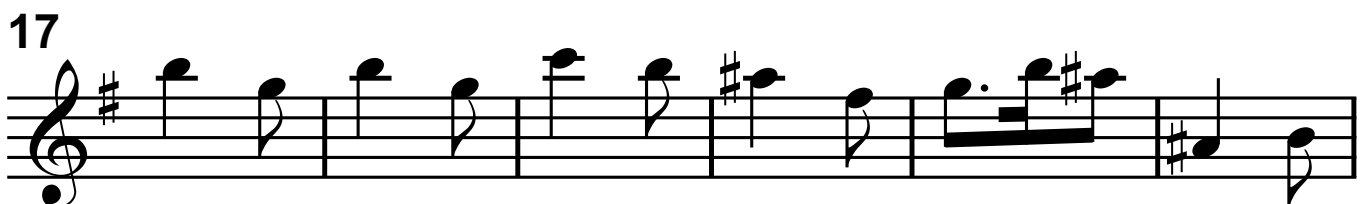
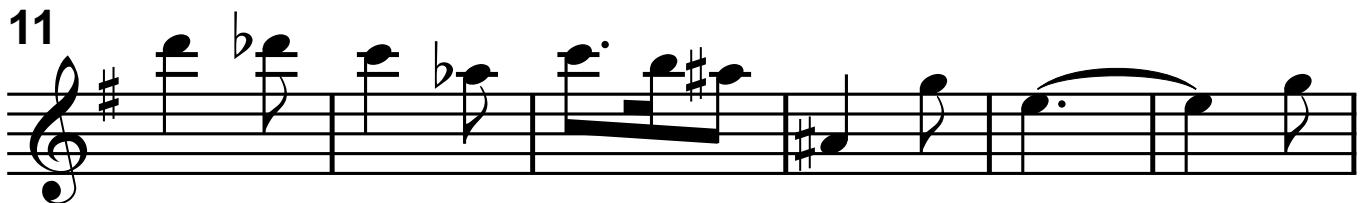
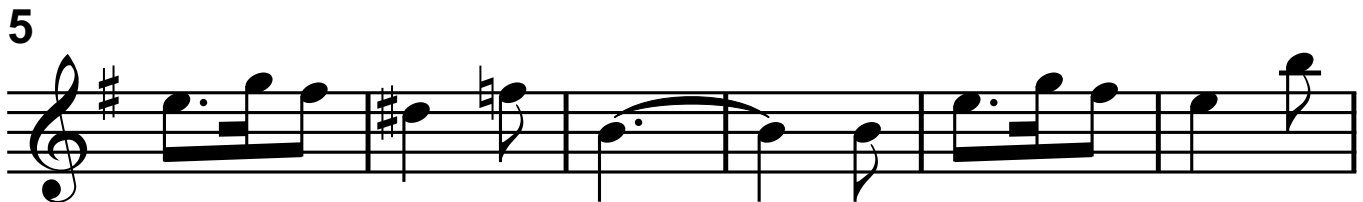
---

---

## Question 8

(b) instrument?

(ci) accompaniment until bar 34?



Question 3(a)

Statement	True	False
A The opening vocal melody is chromatic	<input type="checkbox"/>	<input type="checkbox"/>
B The opening vocal melody is melismatic	<input type="checkbox"/>	<input type="checkbox"/>

## Question 3(c)

	<b>Rhythm</b>
<b>acoustic bass guitar</b>	
<b>second accompanying instrument</b>	

## Question 6(a) – Table

Location	Chord
Bar 3	C minor
X	
Y	
Z	
Bar 6 beat 3	E <sup>b</sup> major

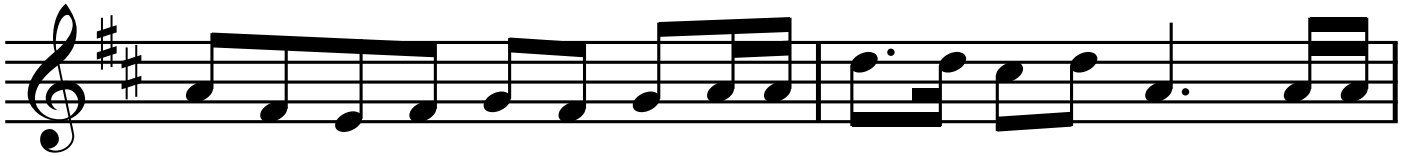
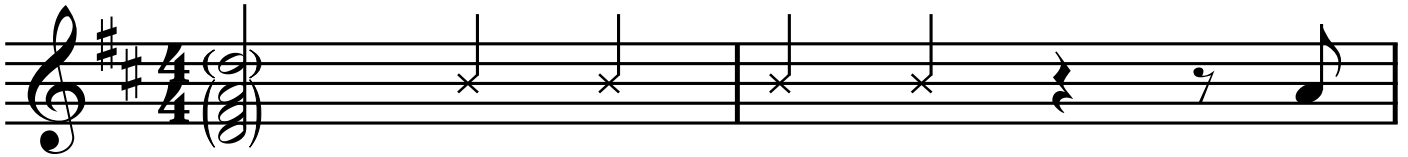


## Question 6(b)

Similarities	Differences
1	1
2	2

Question 7

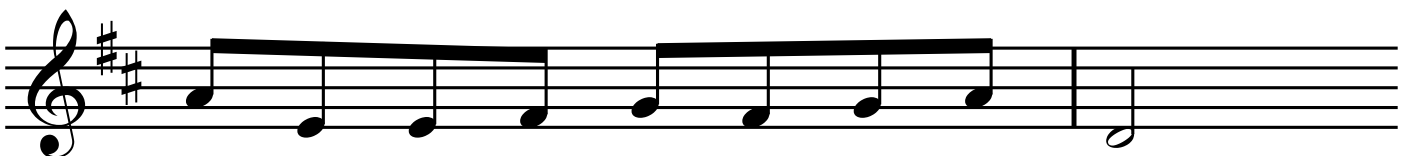
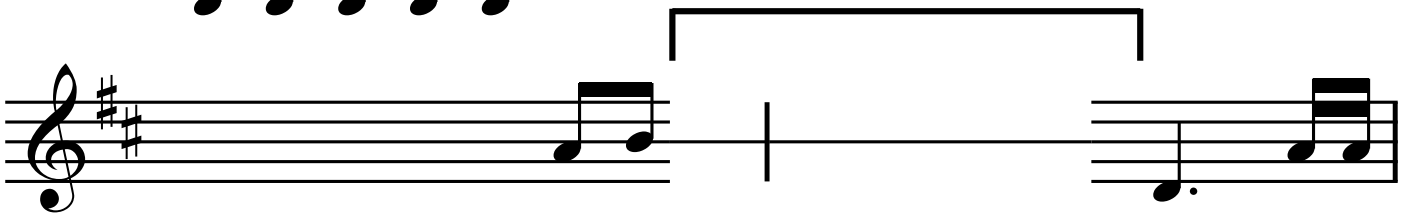
**Allegretto**



**(a) melody?**



**(b) rhythm?**



**Question 7 – Manuscript paper**

---

---

---

---

---

---

---

---

---

---

---

---

---

---

---

---

---

---

---

---

---

---

---

---

---

---

---

---

---

---

---

---

**(continued on the next page)**

**Turn over**

**Question 7 – Manuscript paper continued.**

---

---

---

---

---

---

---

---

---

---

---

---

---

---

---

---

---

---

---

---

---

---

---

---

---

---

---

---

---

---

---

---